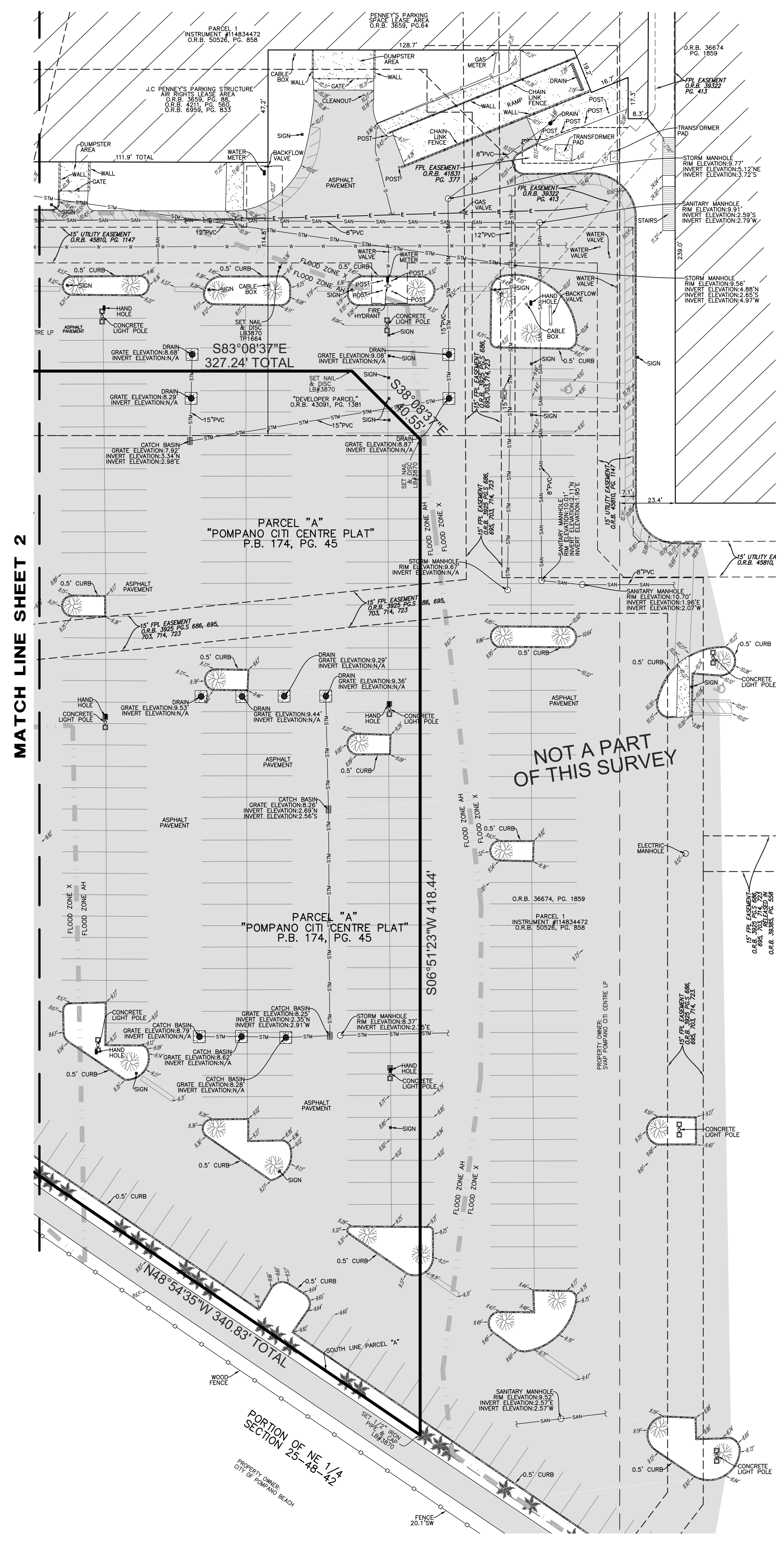
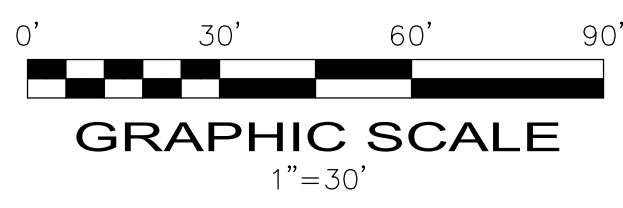


- LEGEND
- CONCRETE
 - ASPHALT PAVEMENT
 - PAVERS
 - ELEVATION
 - OVERHEAD WIRES
 - UNDERGROUND STORM SEWER LINE
 - UNDERGROUND SANITARY SEWER LINE
 - UNDERGROUND WATER LINE
 - UNDERGROUND ELECTRIC LINE
 - UNDERGROUND GAS LINE
 - UNDERGROUND TELEPHONE LINE
 - NON-VEHICULAR ACCESS LINE
 - REINFORCED CONCRETE PIPE
 - CORRUGATED METAL PIPE
 - PLOYVINYLCHLORIDE PIPE
 - CENTERLINE
 - OFFICIAL RECORDS BOOK
 - PLAT BOOK
 - PAGE
 - TRAVERSE POINT (FOR FIELD INFORMATION ONLY)
 - RADIUS
 - CENTRAL ANGLE
 - ARC LENGTH
 - FLORIDA POWER & LIGHT COMPANY
 - LICENSED BUSINESS
 - PALM TREE
 - OAK TREE
 - CYPRESS TREE
 - UNIDENTIFIED TREE



John F Pulice

Digitally signed
by John F Pulice
Date: 2021.12.16
12:32:56 -05'00'



| | |
|---|--|
| DEVELOPMENT PARCEL POMPAÑO CITY CENTER 1400 NE 23RD STREET POMPAÑO BEACH, BROWARD COUNTY FLORIDA 33062 | |
| TOPOGRAPHIC SURVEY ALTA/NSPS LAND TITLE SURVEY | |
| | PULICE LAND SURVEYORS, INC. 5381 NOB HILL ROAD SUNRISE, FLORIDA 33351 TELEPHONE: (954) 572-1777 FAX: (954) 572-1778 E-MAIL: info@puliceandsurveyors.com WEBSITE: www.puliceandsurveyors.com CERTIFICATE OF AUTHORIZATION #13870 |
| DRAWN BY: B.E. CHECKED BY: J.F.P. | SCALE: 1" = 30' SURVEY DATE: 1/30/20 FILE: MORGAN GROVE DEVELOPMENT, LLC ORDER NO: 7754 |

PZ21-13000008
06/28/2023